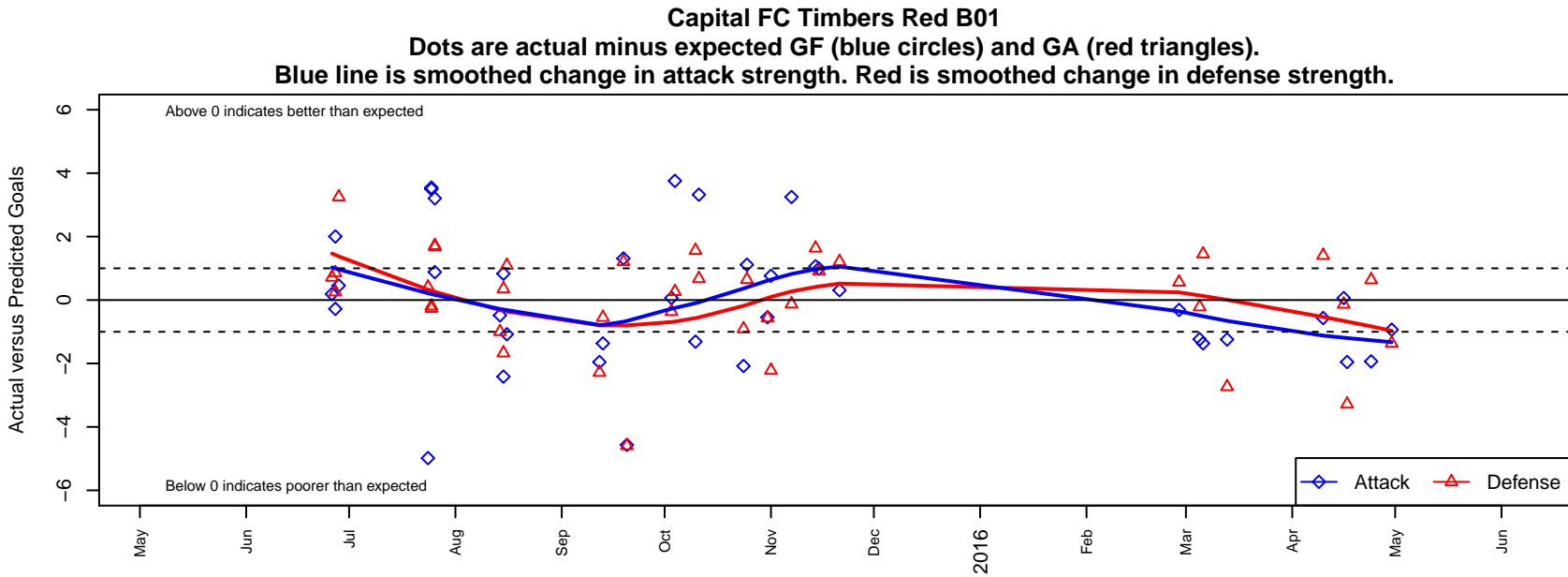


Capital FC Timbers Red B01

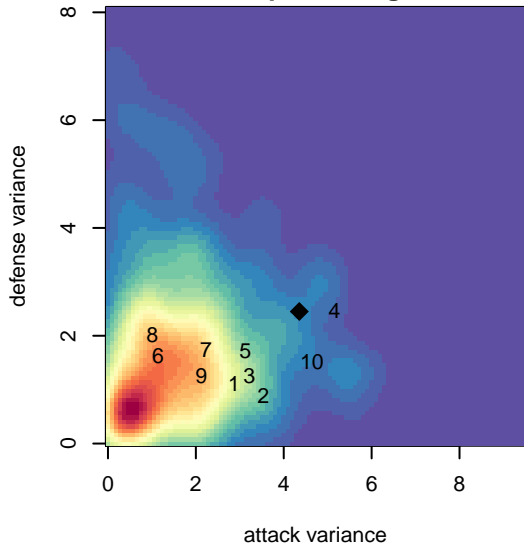
Capital FC
 Salem, OR
 B01 total strength=1130
 attack=4.33 defense=2.27
 fall league = PTT B01 Div 1 Green
 spr league = Spr OYS B01 Div 1 Green
 notes= was CFC Black (A) team but
 Red is A in Timbers

alt names used:
 Capital FC Timbers B01 Red
 CFC Timbers B01 Red
 CAPITAL FC TIMBERS BOYS 01 RED (OR)
 Capital FC Timbers Boys 2001 Red
 Capital FC Timbers Boys 2001 Red
 Capital FC Timbers Boys 2001 Red

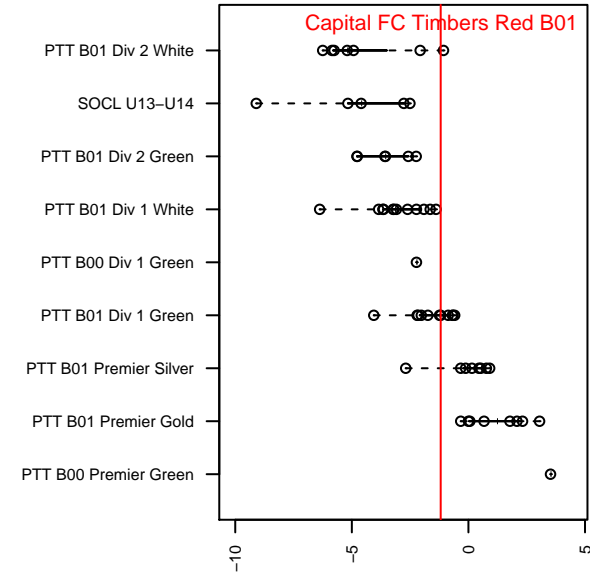
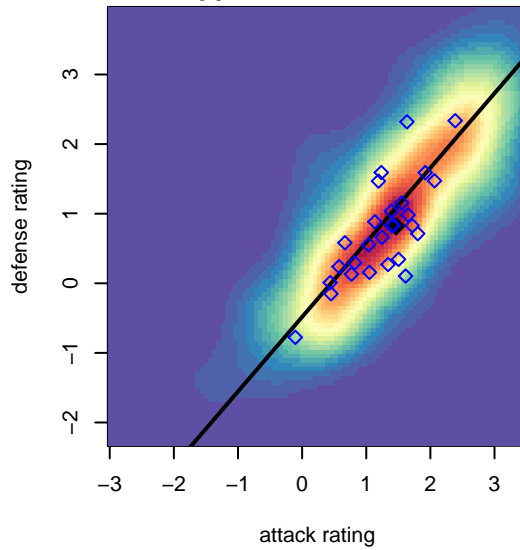
Venues played:
 2015 Capital Cup BU14 Gold
 2015 Oswego Nike Cup Silver/Bronze U14
 2015 Mt Hood Challenge U14
 2015 PTT B01 Division 1 Green
 2015 OYS Presidents Cup B01
 2015 Spr OYS B01 Division 1 Green



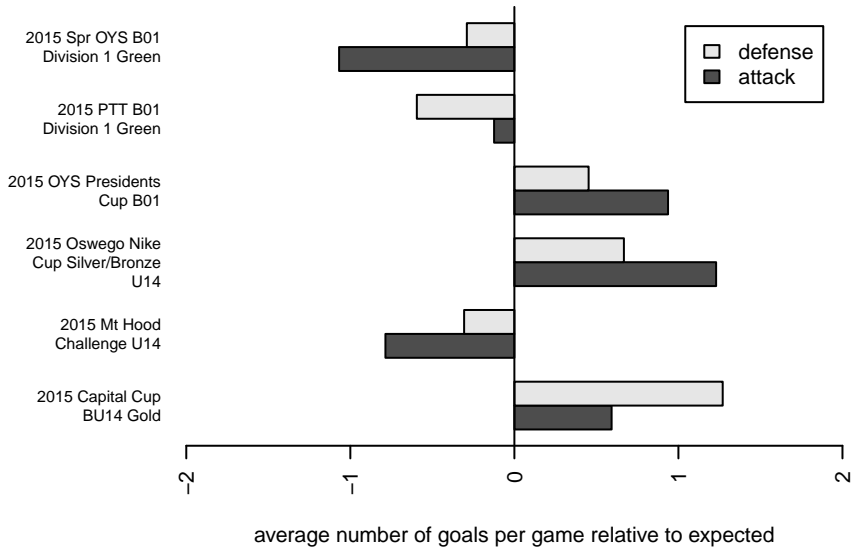
**attack and defense variance (black dot)
relative to other teams
and top 10 in region**



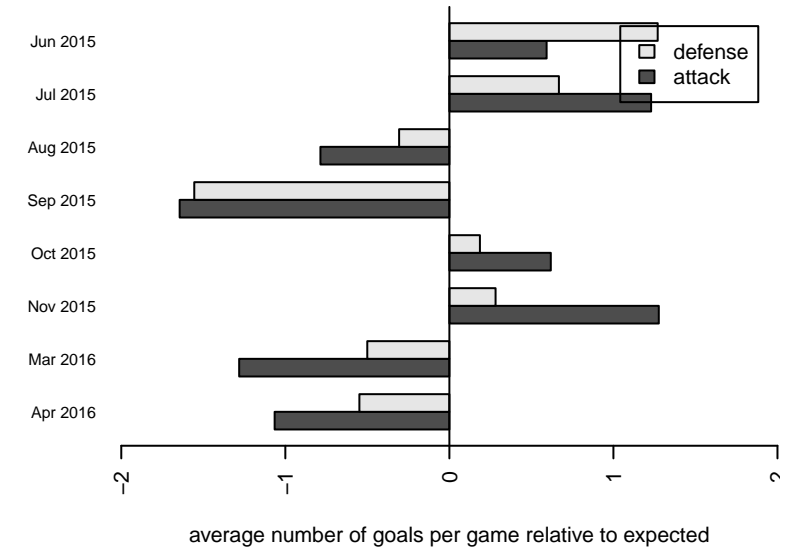
**attack and defense rating
relative to others at age
and all opponents in last 13 months**



Performance relative to 13 month average



Performance relative to 13 month average



date	home		away		venue	pred.home	pred.away
2016-04-30	BSC Portland Black-Legends B01	3	Capital FC Timbers Red B01	1	2015 OYS Presidents Cup B01	1.64	1.93
2016-04-24	BSC Portland Black-Legends B01	1	Capital FC Timbers Red B01	0	2015 Spr OYS B01 Division 1 Green	1.64	1.93
2016-04-17	SESC Celtic B01	5	Capital FC Timbers Red B01	0	2015 Spr OYS B01 Division 1 Green	1.72	1.95
2016-04-16	Capital FC Timbers Red B01	3	THUSC Titanium B01	1	2015 Spr OYS B01 Division 1 Green	2.94	0.87
2016-04-10	Capital FC Timbers Red B01	4	River Plate SC River B01	1	2015 Spr OYS B01 Division 1 Green	4.57	2.40
2016-03-13	Capital FC Timbers Red B01	0	Crossfire Oregon Green II B01	4	2015 Spr OYS B01 Division 1 Green	1.24	1.27
2016-03-06	Washington Timbers Forest B01	0	Capital FC Timbers Red B01	0	2015 Spr OYS B01 Division 1 Green	1.45	1.37
2016-03-05	Capital FC Timbers Red B01	1	Azul FC Gladiators B01	2	2015 Spr OYS B01 Division 1 Green	2.23	1.78
2016-02-28	RVSC Timbers Red B01	1	Capital FC Timbers Red B01	3	2015 Spr OYS B01 Division 1 Green	1.56	3.31
2015-11-21	Eastside Timbers White B01	0	Capital FC Timbers Red B01	3	2015 OYS Presidents Cup B01	1.21	2.69
2015-11-15	Washington Timbers Lime B01	0	Capital FC Timbers Red B01	5	2015 OYS Presidents Cup B01	0.91	4.01
2015-11-14	Capital FC Timbers Red B01	3	BSC Portland Black-Legends B01	0	2015 OYS Presidents Cup B01	1.93	1.64
2015-11-07	Capital FC Timbers Red B01	8	Bend FC Timbers White B01	1	2015 OYS Presidents Cup B01	4.75	0.87
2015-11-01	Azul FC Gladiators B01	4	Capital FC Timbers Red B01	3	2015 PTT B01 Division 1 Green	1.78	2.23
2015-10-31	Capital FC Timbers Red B01	2	Santos FC Halcones B01	3	2015 PTT B01 Division 1 Green	2.54	2.43
2015-10-25	4-H Leon B01	0	Capital FC Timbers Red B01	7	2015 PTT B01 Division 1 Green	0.64	5.89
2015-10-24	FC Salmon Creek Cobras B01	3	Capital FC Timbers Red B01	0	2015 PTT B01 Division 1 Green	2.09	2.08
2015-10-11	Capital FC Timbers Red B01	6	ETFC Valencia Black B01	1	2015 PTT B01 Division 1 Green	2.68	1.67
2015-10-10	RVSC Timbers Red B01	0	Capital FC Timbers Red B01	2	2015 PTT B01 Division 1 Green	1.56	3.31
2015-10-04	Capital FC Timbers Red B01	5	Crossfire Oregon Green II B01	1	2015 PTT B01 Division 1 Green	1.24	1.27
2015-10-03	BSC Portland Black-Legends B01	2	Capital FC Timbers Red B01	2	2015 PTT B01 Division 1 Green	1.64	1.93
2015-09-20	Capital FC Timbers Red B01	0	River Plate SC River B01	7	2015 PTT B01 Division 1 Green	4.57	2.40
2015-09-19	Capital FC Timbers Red B01	4	Eastside Timbers White B01	0	2015 PTT B01 Division 1 Green	2.69	1.21
2015-09-13	Capital FC Timbers Red B01	0	Washington Timbers Forest B01	2	2015 PTT B01 Division 1 Green	1.37	1.45
2015-09-12	SESC Celtic B01	4	Capital FC Timbers Red B01	0	2015 PTT B01 Division 1 Green	1.72	1.95
2015-08-16	Capital FC Timbers Red B01	1	FC Salmon Creek Cobras B01	1	2015 Mt Hood Challenge U14	2.08	2.09
2015-08-15	TC United B01	1	Capital FC Timbers Red B01	3	2015 Mt Hood Challenge U14	1.35	2.17
2015-08-15	Capital FC Timbers Red B01	1	Washington East SC Piger B01	3	2015 Mt Hood Challenge U14	3.41	1.33

date	home		away		venue	pred.home	pred.away
2015-08-14	Capital FC Timbers Red B01	0	3 Rivers Black B01	3	2015 Mt Hood Challenge U14	0.48	2.00
2015-07-26	Tynecastle FC B01	0	Capital FC Timbers Red B01	5	2015 Oswego Nike Cup Silver/Bronze U14	1.72	1.79
2015-07-26	NWN Red B01	1	Capital FC Timbers Red B01	2	2015 Oswego Nike Cup Silver/Bronze U14	2.67	1.12
2015-07-25	Capital FC Timbers Red B01	8	Crossfire Oregon Black I B01	1	2015 Oswego Nike Cup Silver/Bronze U14	4.45	0.73
2015-07-25	PSPL Academy Green 2002B	2	Capital FC Timbers Red B01	7	2015 Oswego Nike Cup Silver/Bronze U14	1.81	3.50
2015-07-24	SESC Lightning B01	0	Capital FC Timbers Red B01	6	2015 Oswego Nike Cup Silver/Bronze U14	0.41	10.98
2015-06-28	FC West Inter B01	1	Capital FC Timbers Red B01	1	2015 Capital Cup BU14 Gold	4.25	0.54
2015-06-27	Capital FC Timbers Red B01	4	PSC Blue -Unk B01	1	2015 Capital Cup BU14 Gold	2.00	1.25
2015-06-27	Capital FC Timbers Red B02	2	Capital FC Timbers Red B01	1	2015 Capital Cup BU14 Gold	2.86	1.28
2015-06-26	Capital FC Timbers Red B01	4	River Plate SC Tiburones B01	0	2015 Capital Cup BU14 Gold	3.81	0.72